

# SEAVIEWS

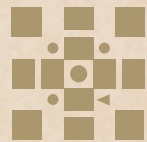
VILLA COLLECTION

— FINCA CORTESIN —

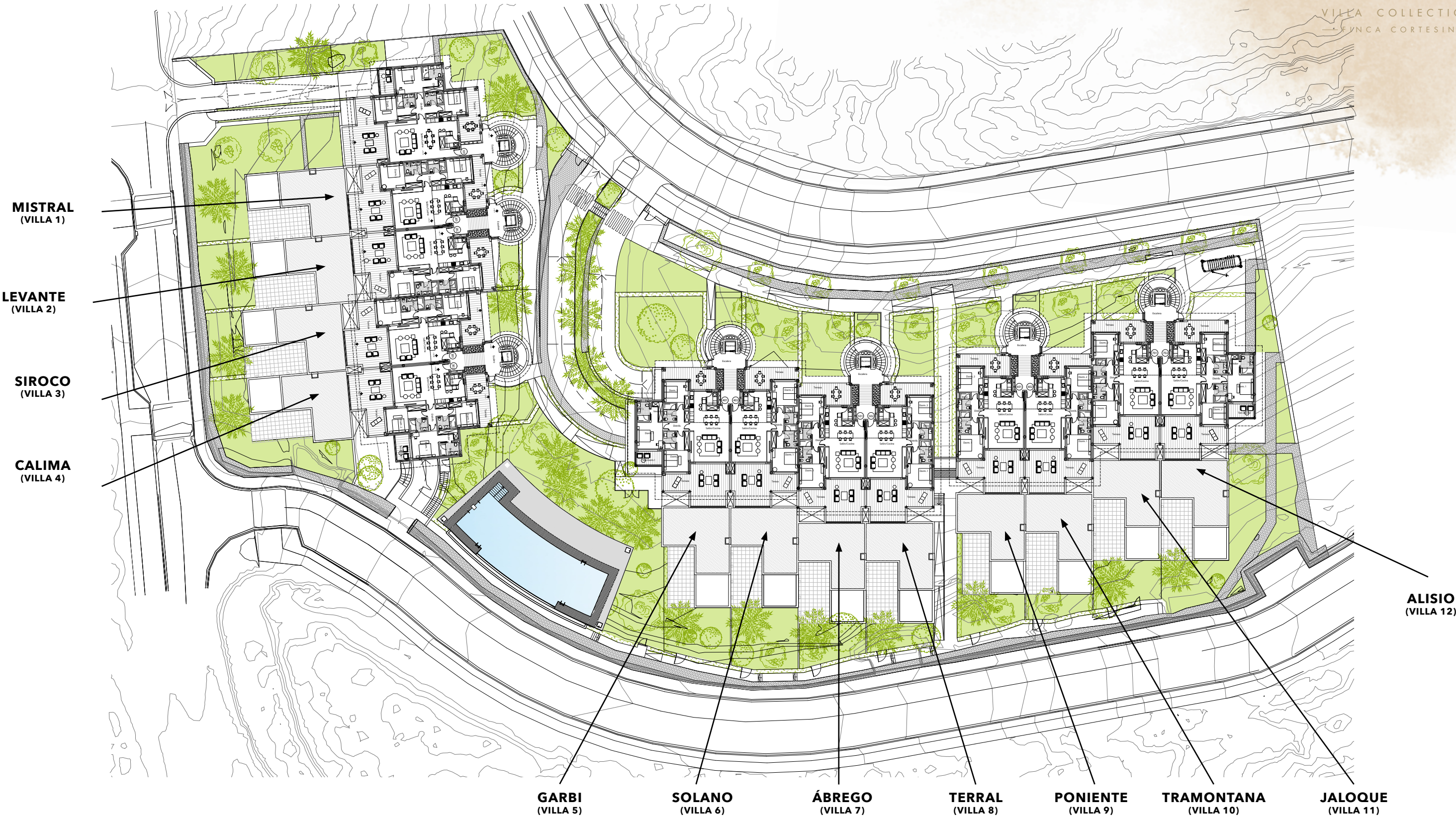




ZONING PLAN  
GROUND FLOOR



SEAVIEWS  
VILLA COLLECTION  
FINCA CORTESIN

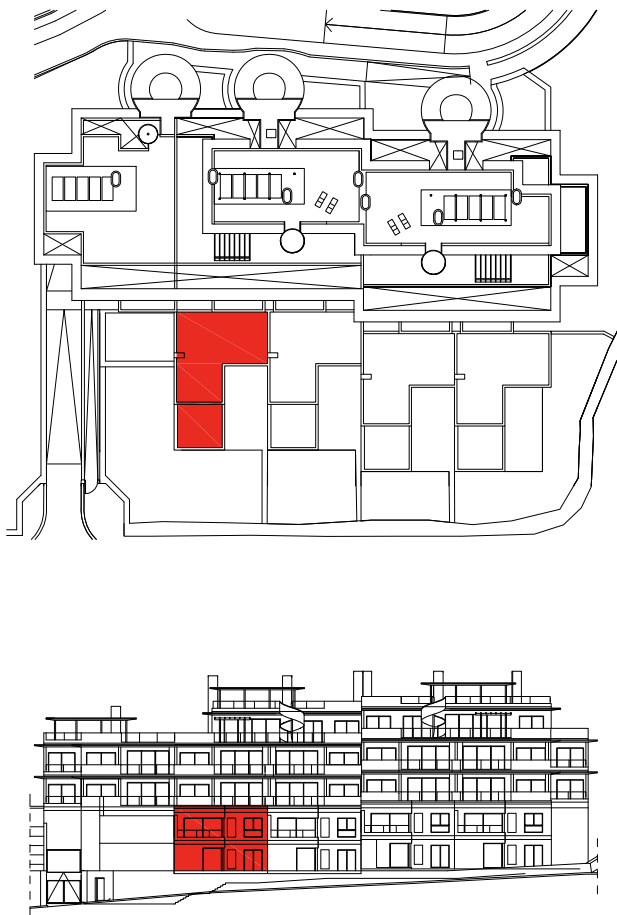




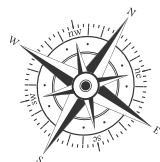
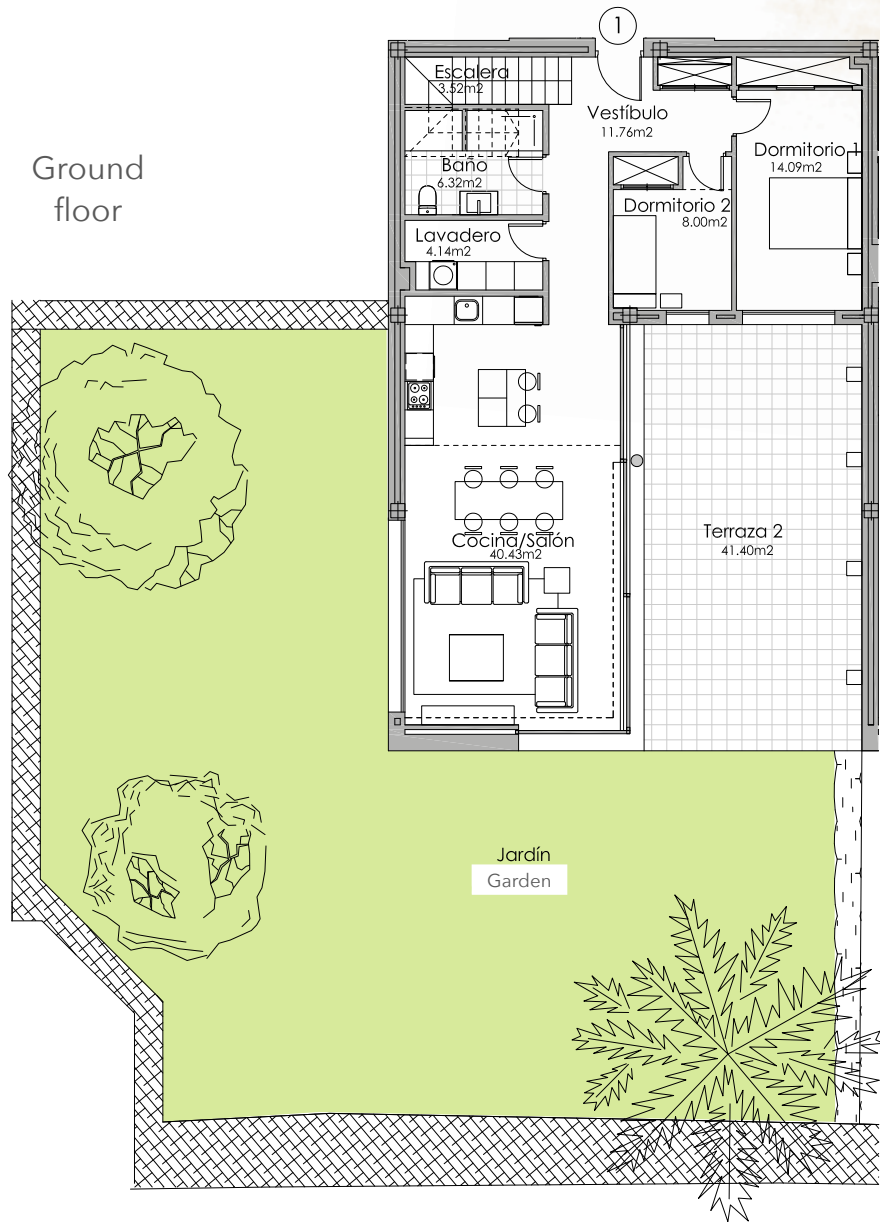
MISTRAL Villa

Villa 1 - 4 BEDROOMS

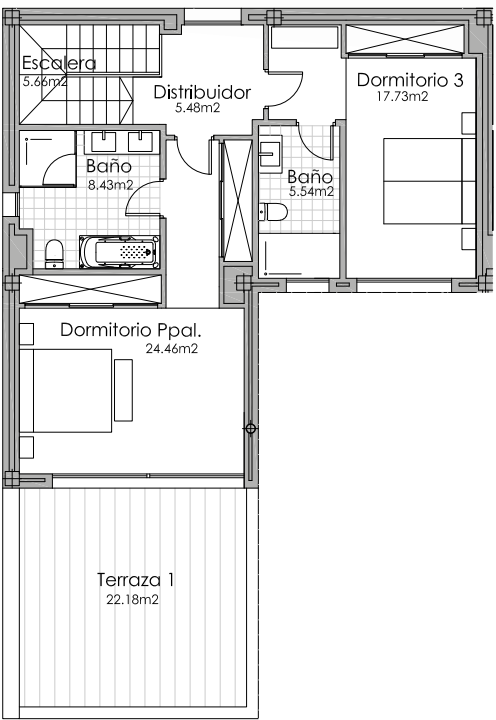
BLOCK A. STAIRCASE 2 GROUND FLOOR - GARDEN



Block A



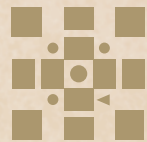
First floor



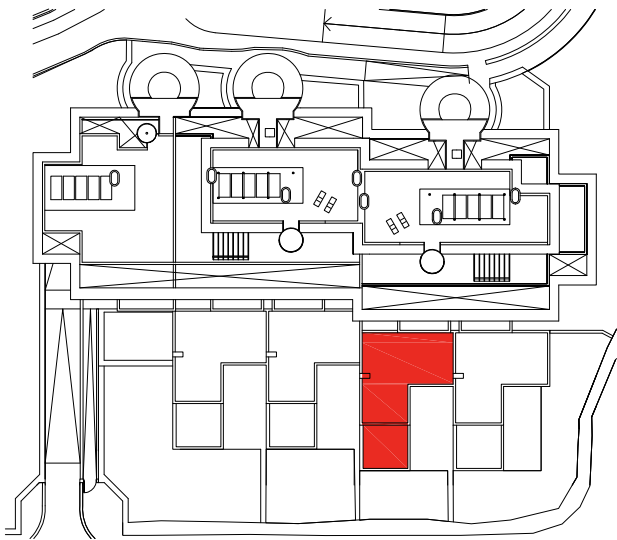
SECTOR UR-10A "FINCA EL CORTESÍN" CASARES, MÁLAGA

| SURFACES                    |                       |                                  |                       |
|-----------------------------|-----------------------|----------------------------------|-----------------------|
| Surface of constructed area | 184,56 m <sup>2</sup> | Surface of utilised area         | 155,56 m <sup>2</sup> |
| Surface of communal area    | 7,88 m <sup>2</sup>   | Surface of utilised terrace area | 63,58 m <sup>2</sup>  |
| Surface of terrace area     | 69,43 m <sup>2</sup>  | Surface of utilised garden area  | 190,44 m <sup>2</sup> |
| TOTAL SURFACE               |                       | 261,87 m <sup>2</sup>            |                       |

SIROCO Villa  
Villa 3 - 3 BEDROOMS  
BLOCK A. STAIRCASE 3 GROUND FLOOR - GARDEN

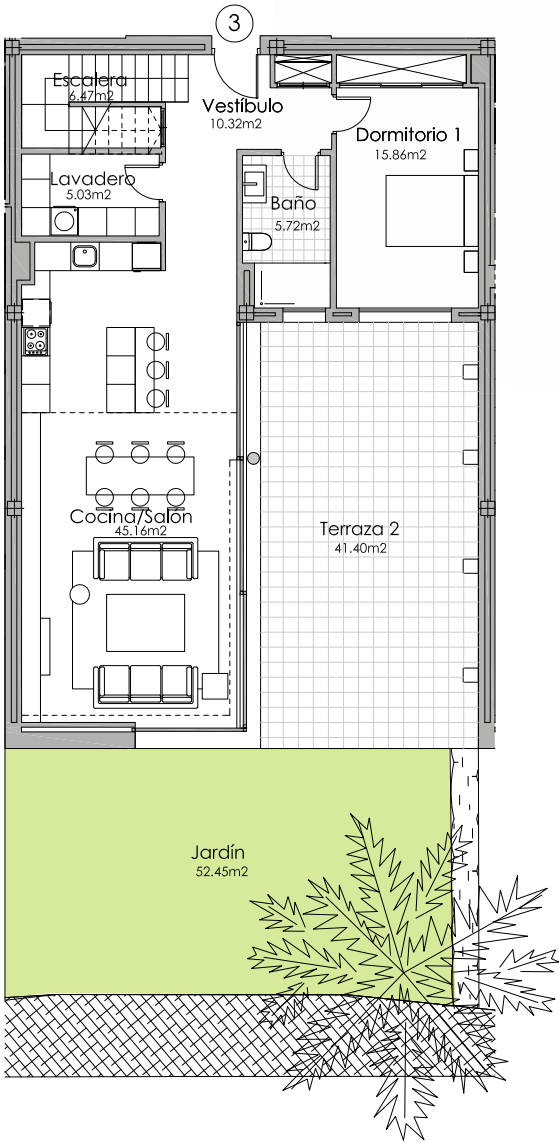


SEAVIEWS  
VILLA COLLECTION  
— FINCA CORTESIN —

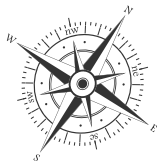
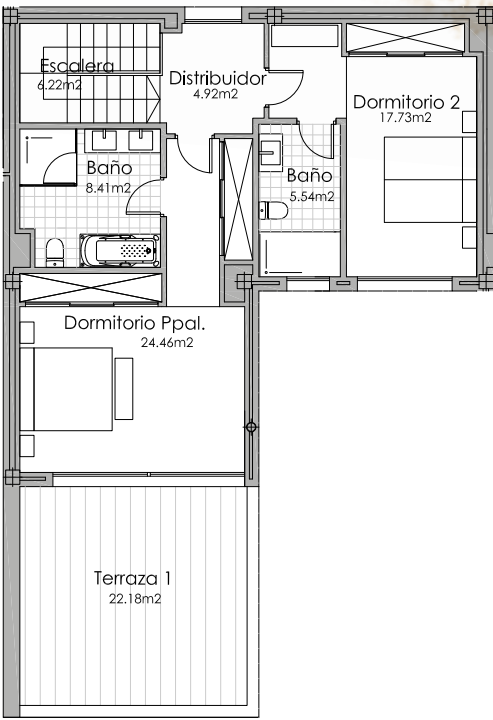


Block A

Ground floor



First floor



SECTOR UR-10A "FINCA EL CORTESÍN" CASARES, MÁLAGA

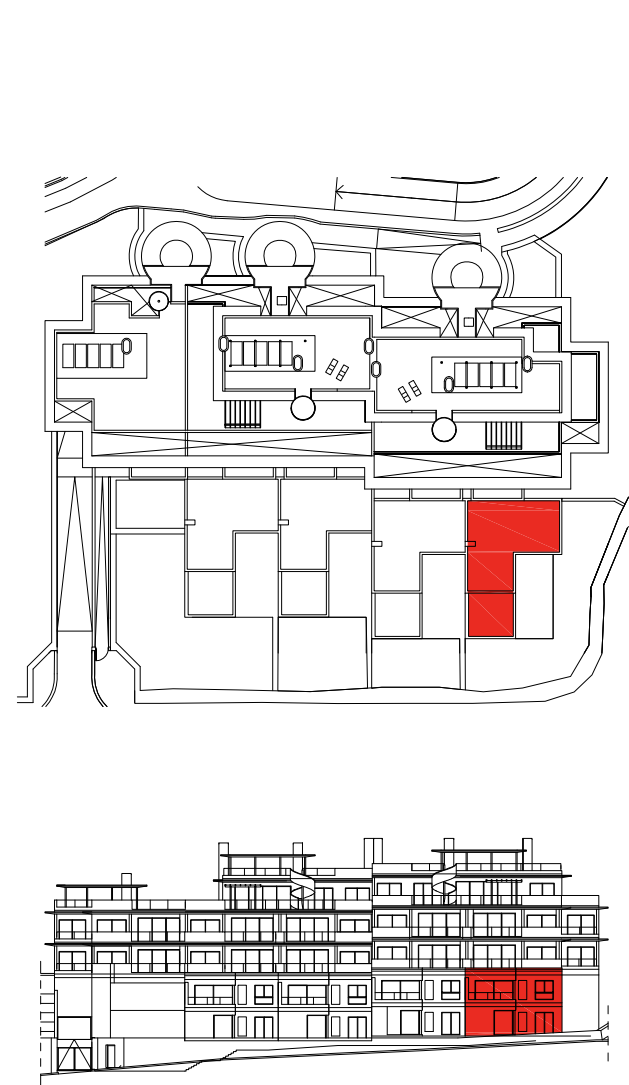
| SURFACES                    |                       |                                  |                       |
|-----------------------------|-----------------------|----------------------------------|-----------------------|
| Surface of constructed area | 184,56 m <sup>2</sup> | Surface of utilised area         | 155,84 m <sup>2</sup> |
| Surface of communal area    | 7,88 m <sup>2</sup>   | Surface of utilised terrace area | 63,58 m <sup>2</sup>  |
| Surface of terrace area     | 69,43 m <sup>2</sup>  | Surface of utilised garden area  | 52,45 m <sup>2</sup>  |
| TOTAL SURFACE               | 261,87 m <sup>2</sup> |                                  |                       |



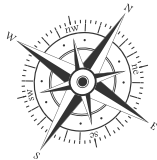
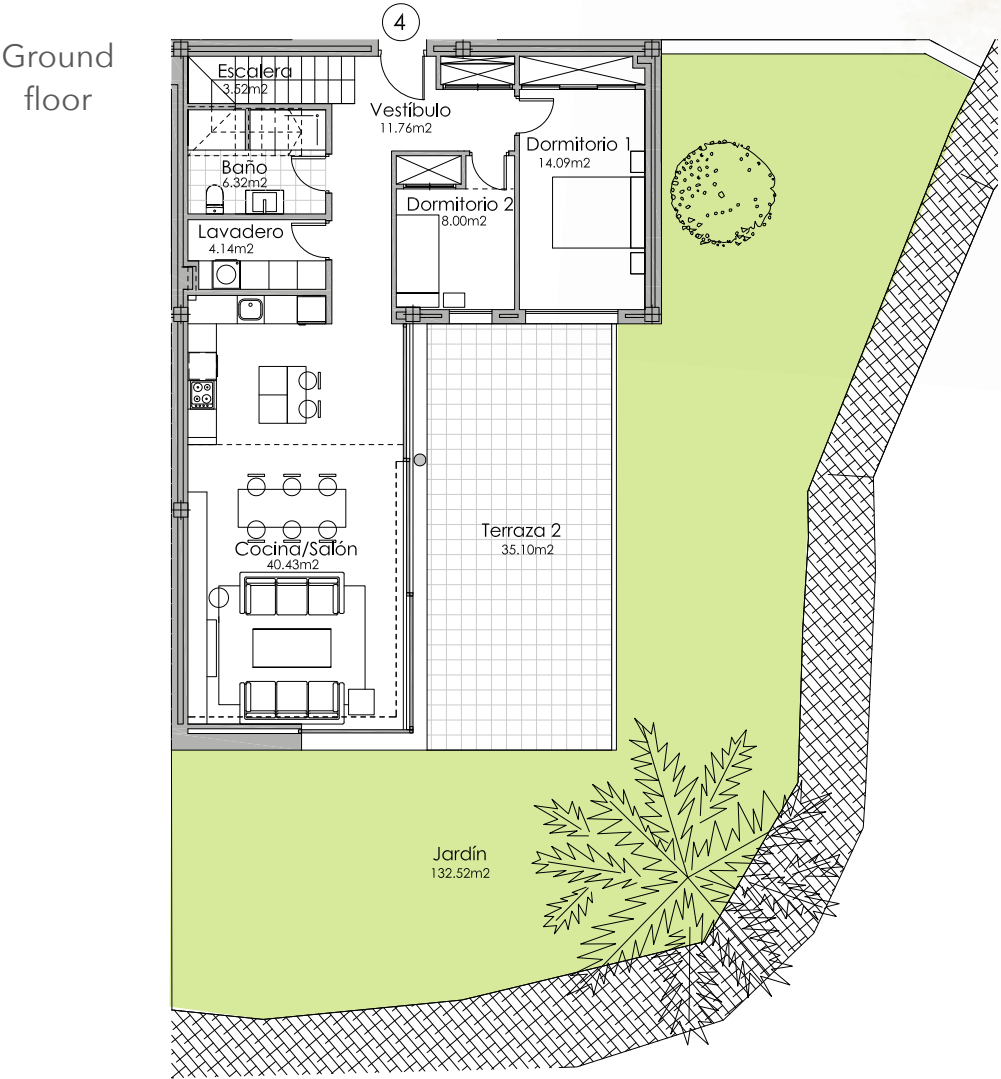
CALIMA Villa

Villa 4 - 4 BEDROOMS

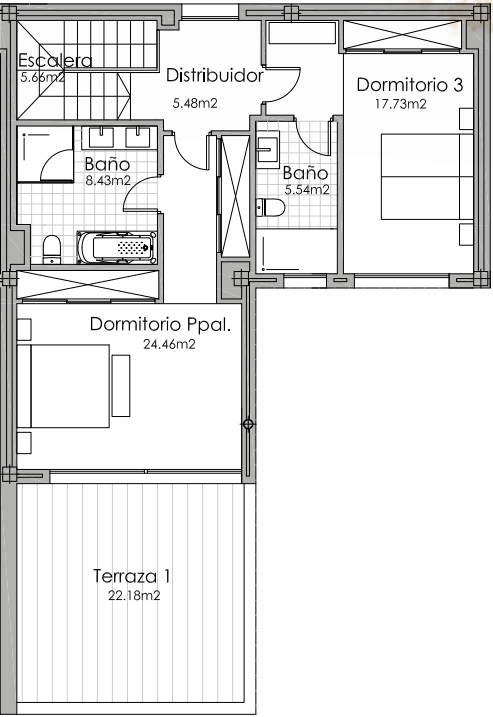
BLOCK A. STAIRCASE 3 GROUND FLOOR - GARDEN



Block A



First floor

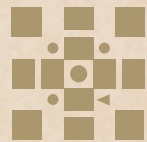


SECTOR UR-10A "FINCA EL CORTESÍN" CASARES, MÁLAGA

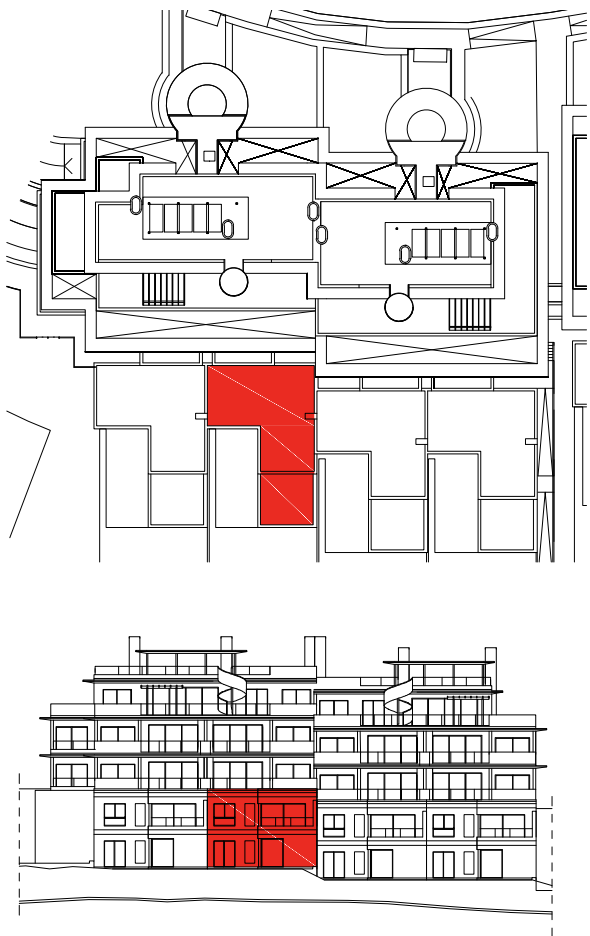
| SURFACES                    |                       |                                  |                       |
|-----------------------------|-----------------------|----------------------------------|-----------------------|
| Surface of constructed area | 184,56 m <sup>2</sup> | Surface of utilised area         | 155,56 m <sup>2</sup> |
| Surface of communal area    | 7,88 m <sup>2</sup>   | Surface of utilised terrace area | 57,28 m <sup>2</sup>  |
| Surface of terrace area     | 62,30 m <sup>2</sup>  | Surface of utilised garden area  | 132,52 m <sup>2</sup> |
| TOTAL SURFACE               | 254,74 m <sup>2</sup> |                                  |                       |



SOLANO Villa  
Villa 6 - 3 BEDROOMS  
BLOCK B. STAIRCASE 4 GROUND FLOOR - GARDEN

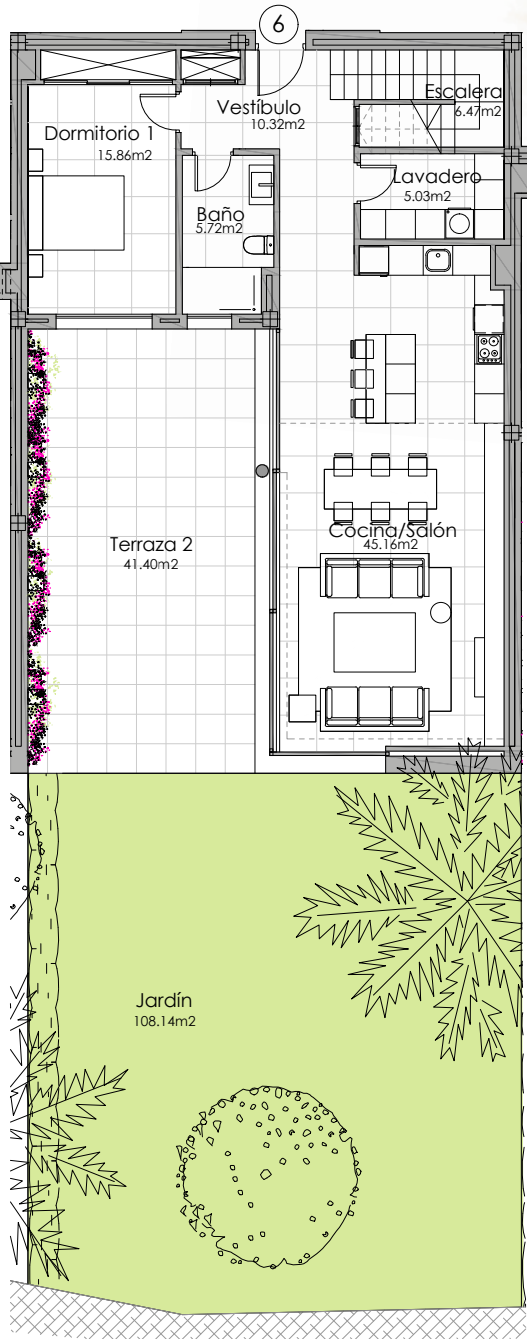


SEAVIEWS  
VILLA COLLECTION  
— FINCA CORTESIN —

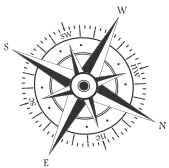
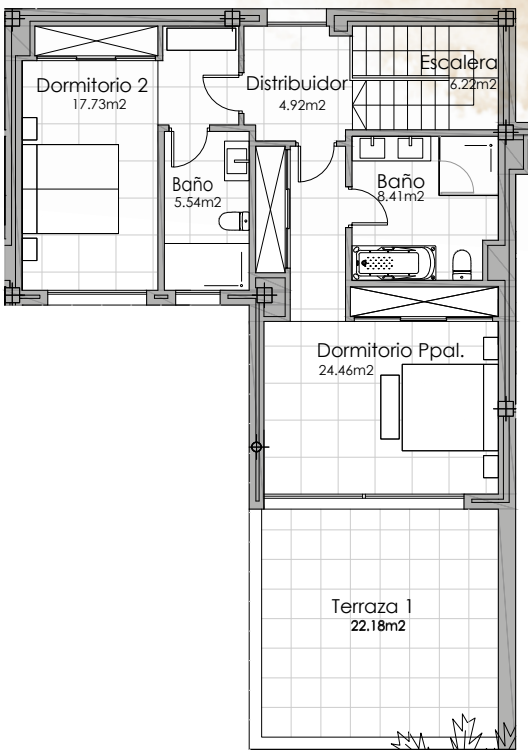


Block B

Ground floor



First floor



SECTOR UR-10A "FINCA EL CORTESÍN" CASARES, MÁLAGA

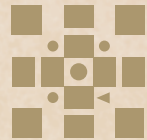
| SURFACES                    |                       |                                  |                       |
|-----------------------------|-----------------------|----------------------------------|-----------------------|
| Surface of constructed area | 184,56 m <sup>2</sup> | Surface of utilised area         | 155,84 m <sup>2</sup> |
| Surface of communal area    | 7,88 m <sup>2</sup>   | Surface of utilised terrace area | 63,58 m <sup>2</sup>  |
| Surface of terrace area     | 69,43 m <sup>2</sup>  | Surface of utilised garden area  | 108,14 m <sup>2</sup> |
| TOTAL SURFACE               | 261,87 m <sup>2</sup> |                                  |                       |



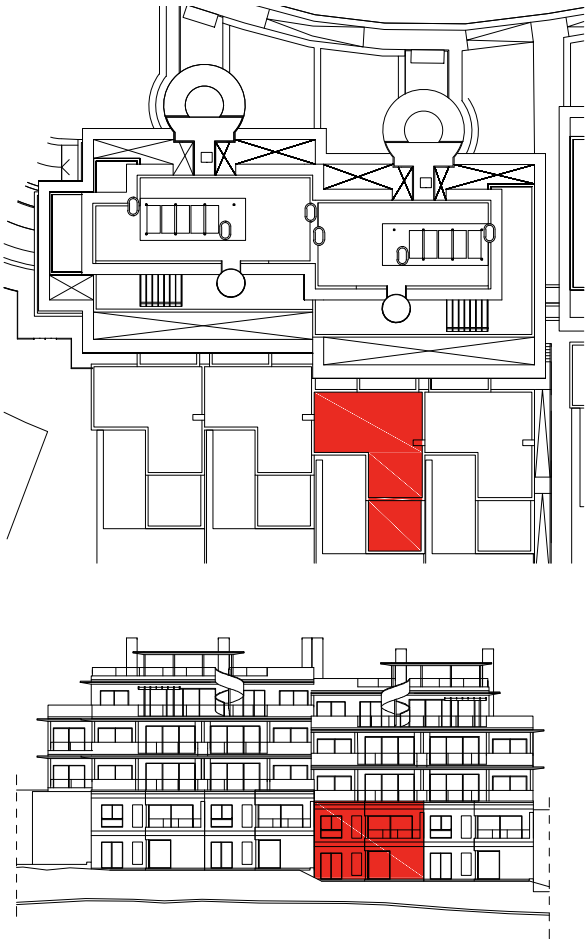
ÁBREGO Villa

Villa 7 - 3 BEDROOMS

BLOCK B. STAIRCASE 5 GROUND FLOOR - GARDEN

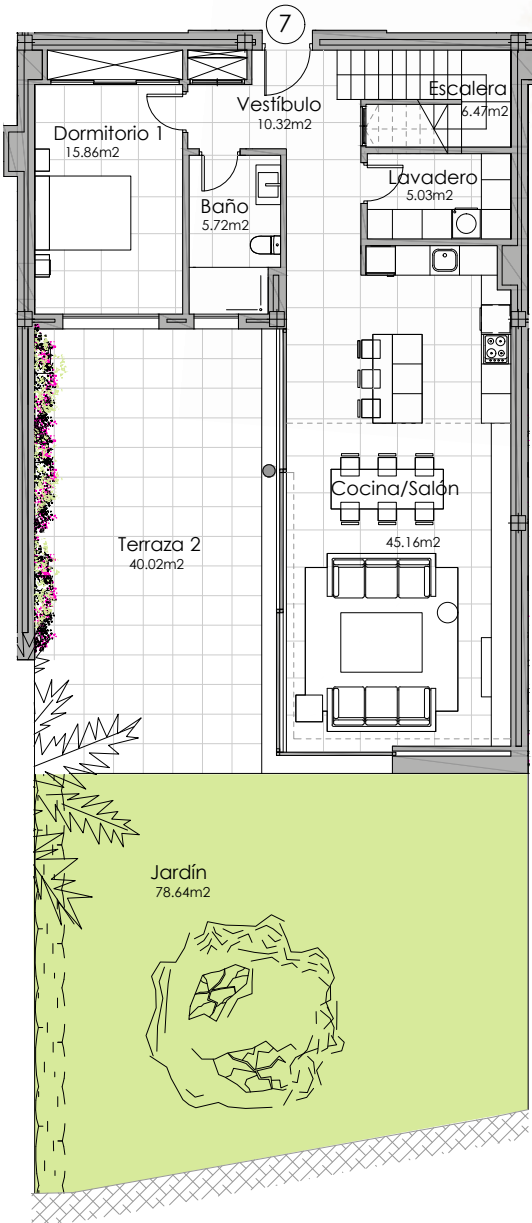


SEAVIEWS  
VILLA COLLECTION  
— FINCA CORTESIN —

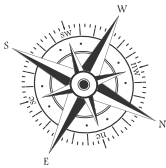
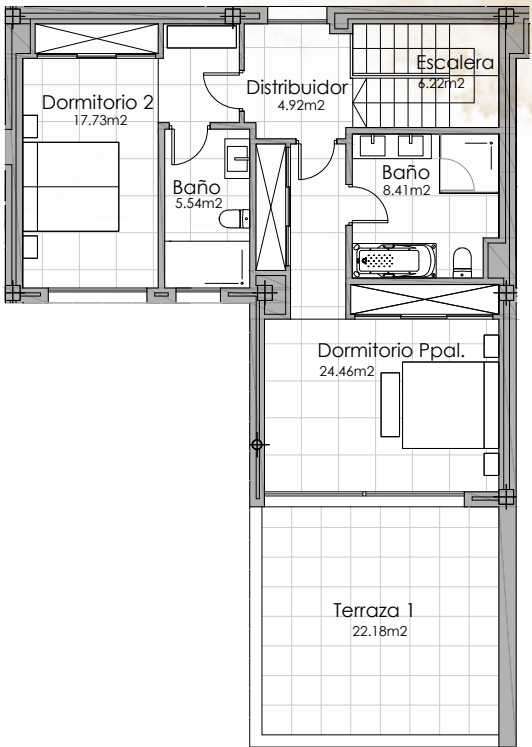


Block B

Ground floor



First floor



SECTOR UR-10A "FINCA EL CORTESÍN" CASARES, MÁLAGA

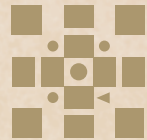
| SURFACES                    |                       |                                  |                       |
|-----------------------------|-----------------------|----------------------------------|-----------------------|
| Surface of constructed area | 184,56 m <sup>2</sup> | Surface of utilised area         | 155,84 m <sup>2</sup> |
| Surface of communal area    | 7,88 m <sup>2</sup>   | Surface of utilised terrace area | 62,20 m <sup>2</sup>  |
| Surface of terrace area     | 67,69 m <sup>2</sup>  | Surface of utilised garden area  | 78,64 m <sup>2</sup>  |
| TOTAL SURFACE               |                       | 260,13 m <sup>2</sup>            |                       |



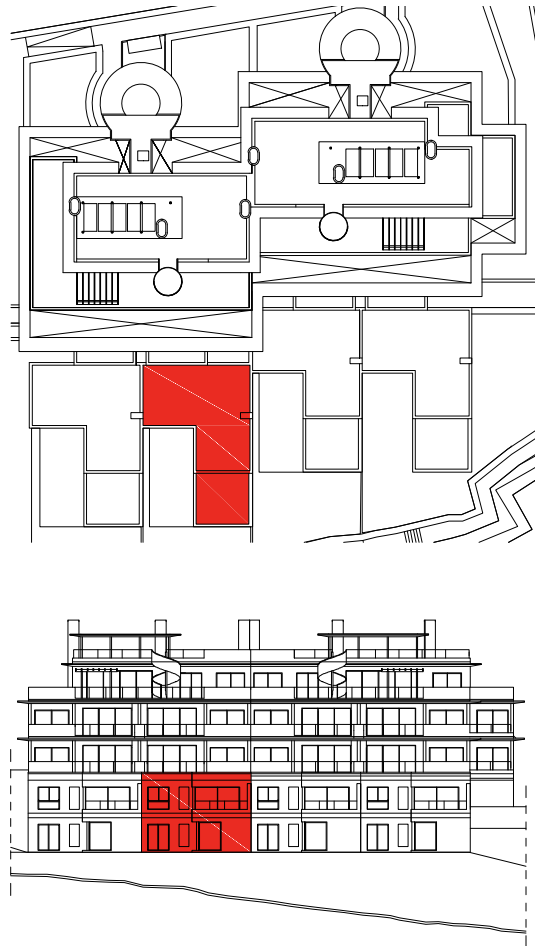
TRAMONTANA Villa

Villa 10 - 3 BEDROOMS

BLOCK C. STAIRCASE 6 GROUND FLOOR - GARDEN

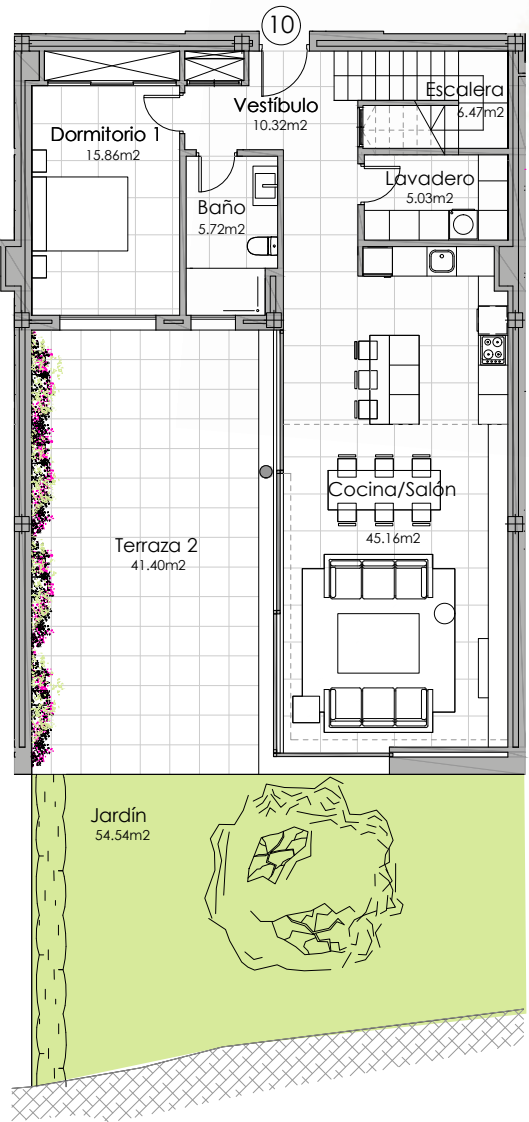


SEAVIEWS  
VILLA COLLECTION  
— FINCA CORTESIN —

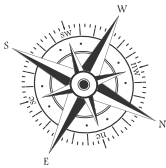
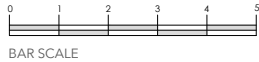
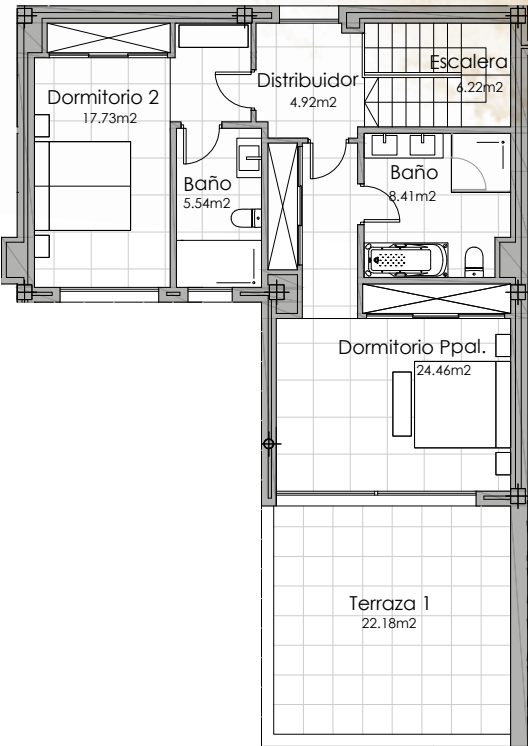


Block C

Ground  
floor



First  
floor



SECTOR UR-10A "FINCA EL CORTESÍN" CASARES, MÁLAGA

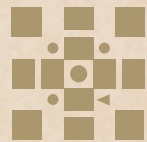
| SURFACES                    |                       |                                  |                       |
|-----------------------------|-----------------------|----------------------------------|-----------------------|
| Surface of constructed area | 184,56 m <sup>2</sup> | Surface of utilised area         | 155,84 m <sup>2</sup> |
| Surface of communal area    | 7,88 m <sup>2</sup>   | Surface of utilised terrace area | 63,58 m <sup>2</sup>  |
| Surface of terrace area     | 69,43 m <sup>2</sup>  | Surface of utilised garden area  | 54,54 m <sup>2</sup>  |
| TOTAL SURFACE               | 261,87 m <sup>2</sup> |                                  |                       |



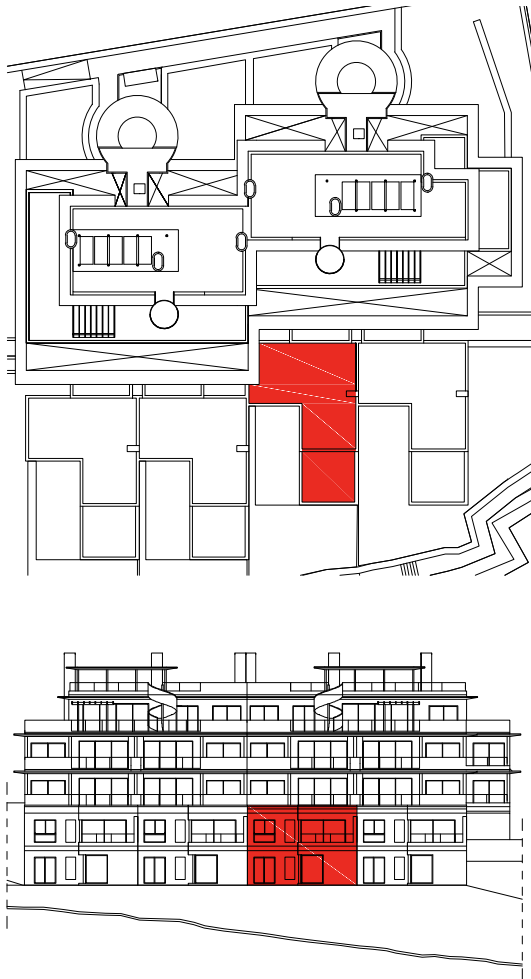
JALOQUE Villa

Villa 11 - 3 BEDROOMS

BLOCK C. STAIRCASE 7 GROUND FLOOR - GARDEN

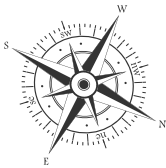
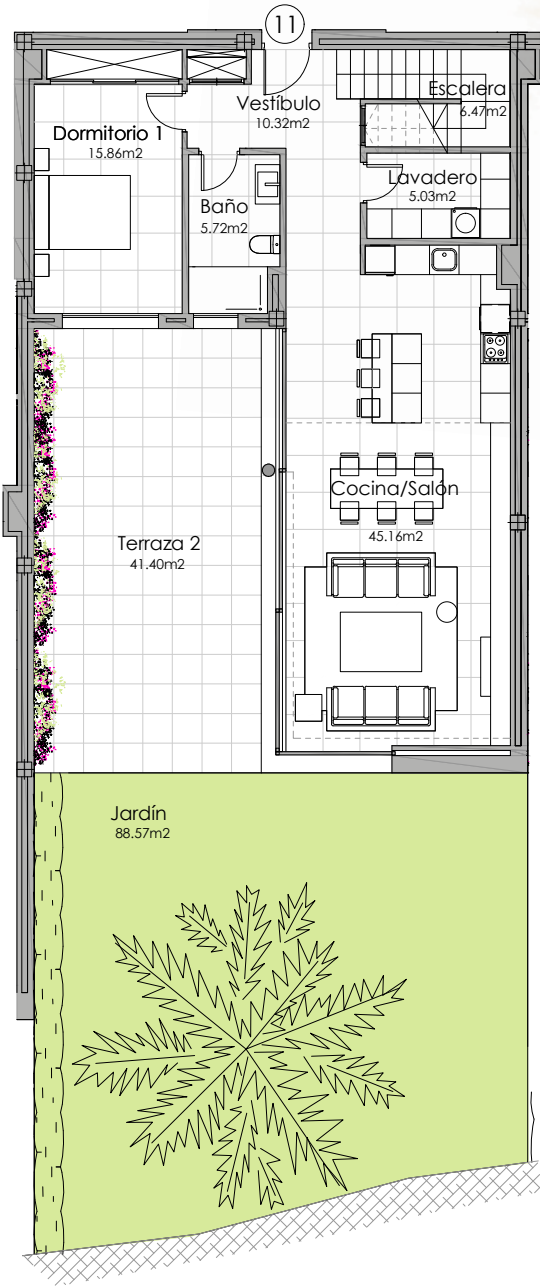


SEAVIEWS  
VILLA COLLECTION  
— FINCA CORTESIN —

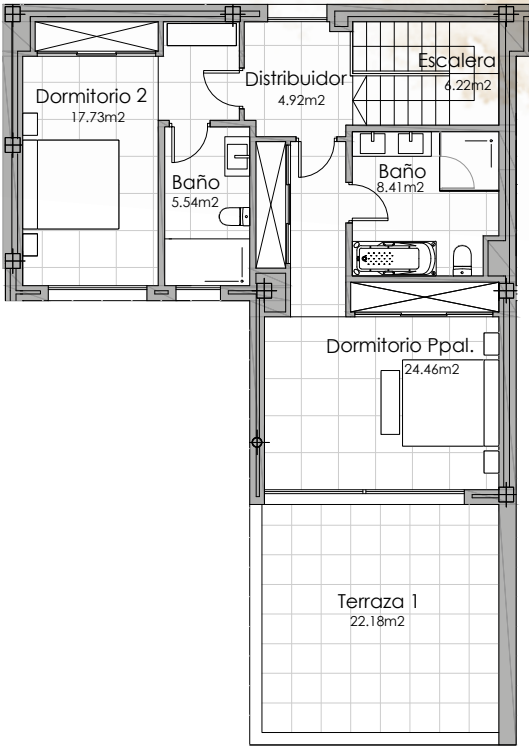


Block C

Ground floor



First floor



SECTOR UR-10A "FINCA EL CORTESÍN" CASARES, MÁLAGA

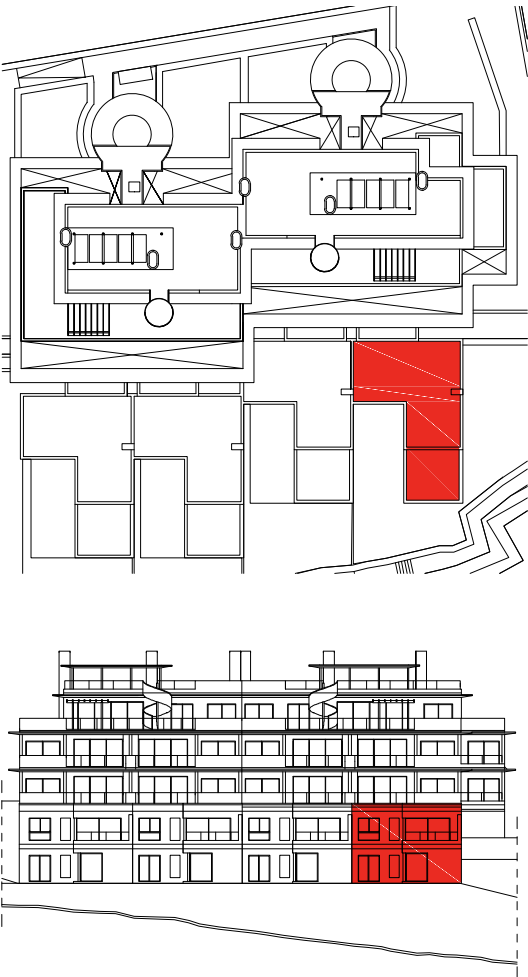
| SURFACES                    |                       |                                  |                       |
|-----------------------------|-----------------------|----------------------------------|-----------------------|
| Surface of constructed area | 184,56 m <sup>2</sup> | Surface of utilised area         | 155,84 m <sup>2</sup> |
| Surface of communal area    | 7,88 m <sup>2</sup>   | Surface of utilised terrace area | 63,58 m <sup>2</sup>  |
| Surface of terrace area     | 69,43 m <sup>2</sup>  | Surface of utilised garden area  | 88,57 m <sup>2</sup>  |
| TOTAL SURFACE               |                       | 261,87 m <sup>2</sup>            |                       |



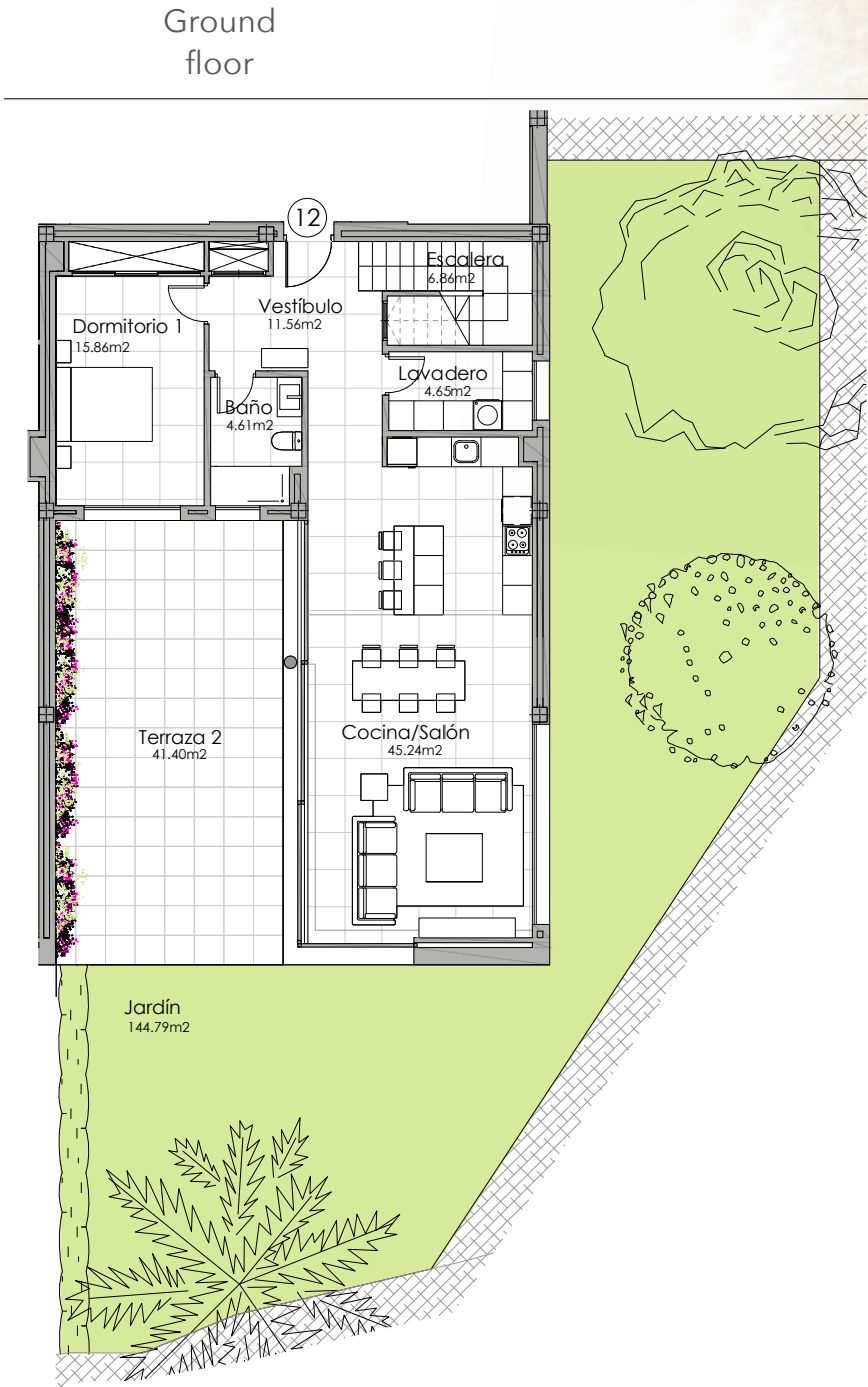
ALISIO Villa

Villa 12 - 3 BEDROOMS

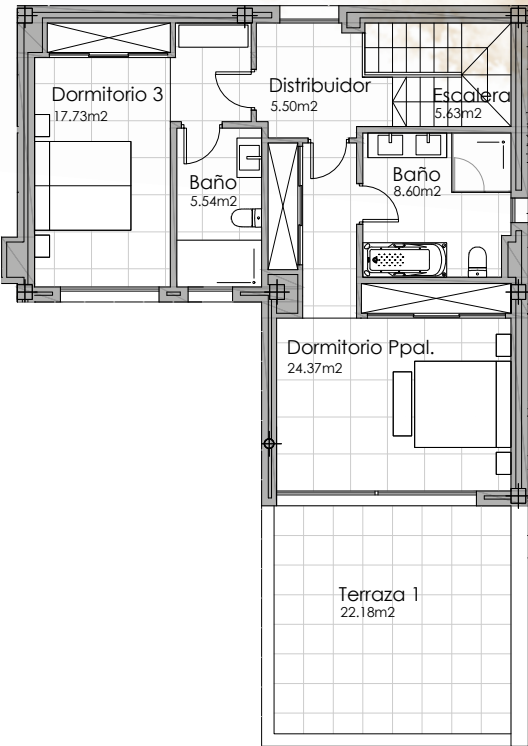
BLOCK C. STAIRCASE 7 GROUND FLOOR - GARDEN



Block C

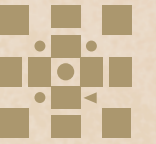


First floor



SECTOR UR-10A "FINCA EL CORTESÍN" CASARES, MÁLAGA

| SURFACES                    |                       |                                  |                       |
|-----------------------------|-----------------------|----------------------------------|-----------------------|
| Surface of constructed area | 184,56 m <sup>2</sup> | Surface of utilised area         | 156,15 m <sup>2</sup> |
| Surface of communal area    | 7,88 m <sup>2</sup>   | Surface of utilised terrace area | 63,58 m <sup>2</sup>  |
| Surface of terrace area     | 69,43 m <sup>2</sup>  | Surface of utilised garden area  | 144,79 m <sup>2</sup> |
| TOTAL SURFACE               |                       | 261,87 m <sup>2</sup>            |                       |



SEAVIEWS  
VILLA COLLECTION  
— FINCA CORTESIN —

In compliance with the DECREE of the Junta de Andalucía 218/2005, the useful surface of exterior floor spaces which are for the private use of the dwellings means 50% of the actual surface to a maximum of 10% the useful enclosed surface.

Information, computer graphics and graphic documentation that appear in this brochure are indicative, finishes may include extras not included are subject to changes arising from final project and its construction. All the furniture is merely decorative. The other information referred to in R.D.218/2005 of the Government of Andalusia, is available in our offices for consultation.

DEVELOPED BY

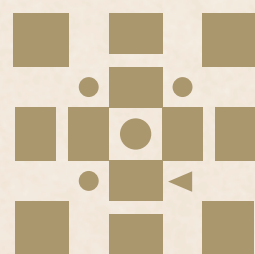
**exacon**  
*smart* LIVING

Information and graphic material are purely informative and have no contractual value. They may be subject to changes due to technical or legal requirements or by initiative of the Project Management team. Gardening, decoration and furniture are for the purpose of decoration and are non-binding. The remaining information referring to the Royal Decree 218/2005 from the Andalusian Government is available in our offices.

MARKETING & SALES BY

 **TUSCANY**  
REALTY GROUP





# SEAVIEWS

VILLA COLLECTION

— FINCA CORTESIN —

DEVELOPED BY

**exxacon**  
*smart* LIVING

C. C. Guadalmina  
Edificio 3 Planta 1ª Oficina 4.  
29670 Marbella - Málaga (España)



✉ [exxacon@exxacon.es](mailto:exxacon@exxacon.es)  
🌐 [exxacon.es](http://exxacon.es)  
☎ +34 952 906 110



MARKETING & SALES BY

**TUSCANY**  
REALTY GROUP

C. C. Guadalmina | Edificio II, 1ª Planta,  
Oficina nº 5. 29670 | MARBELLA  
T. +34 951 635 631 | [info@tuscanygroup.es](mailto:info@tuscanygroup.es) | [tuscanygroup.es](http://tuscanygroup.es)

