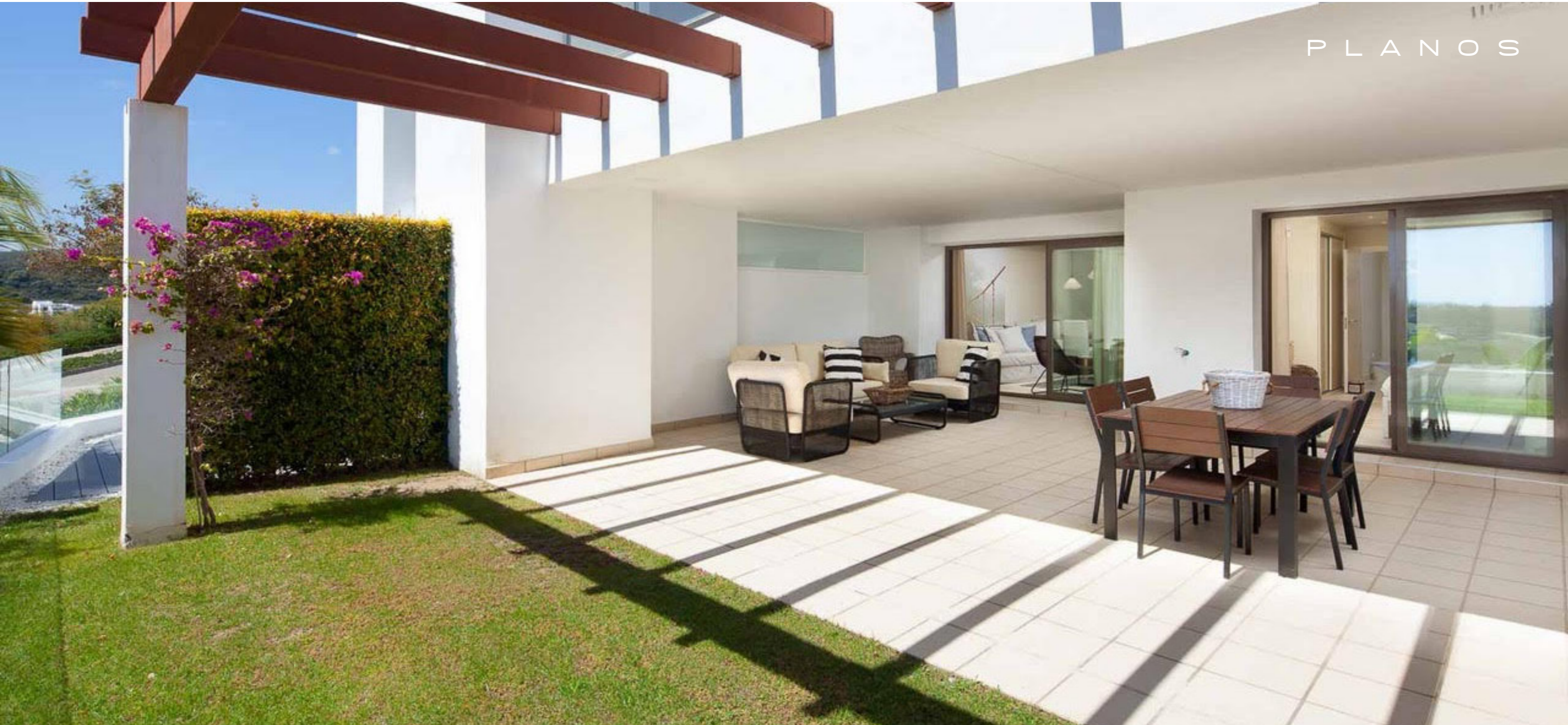




LAS TERRAZAS DE CORTESÍN
URBANIZACIÓN FINCA CORTESÍN

PLANOS

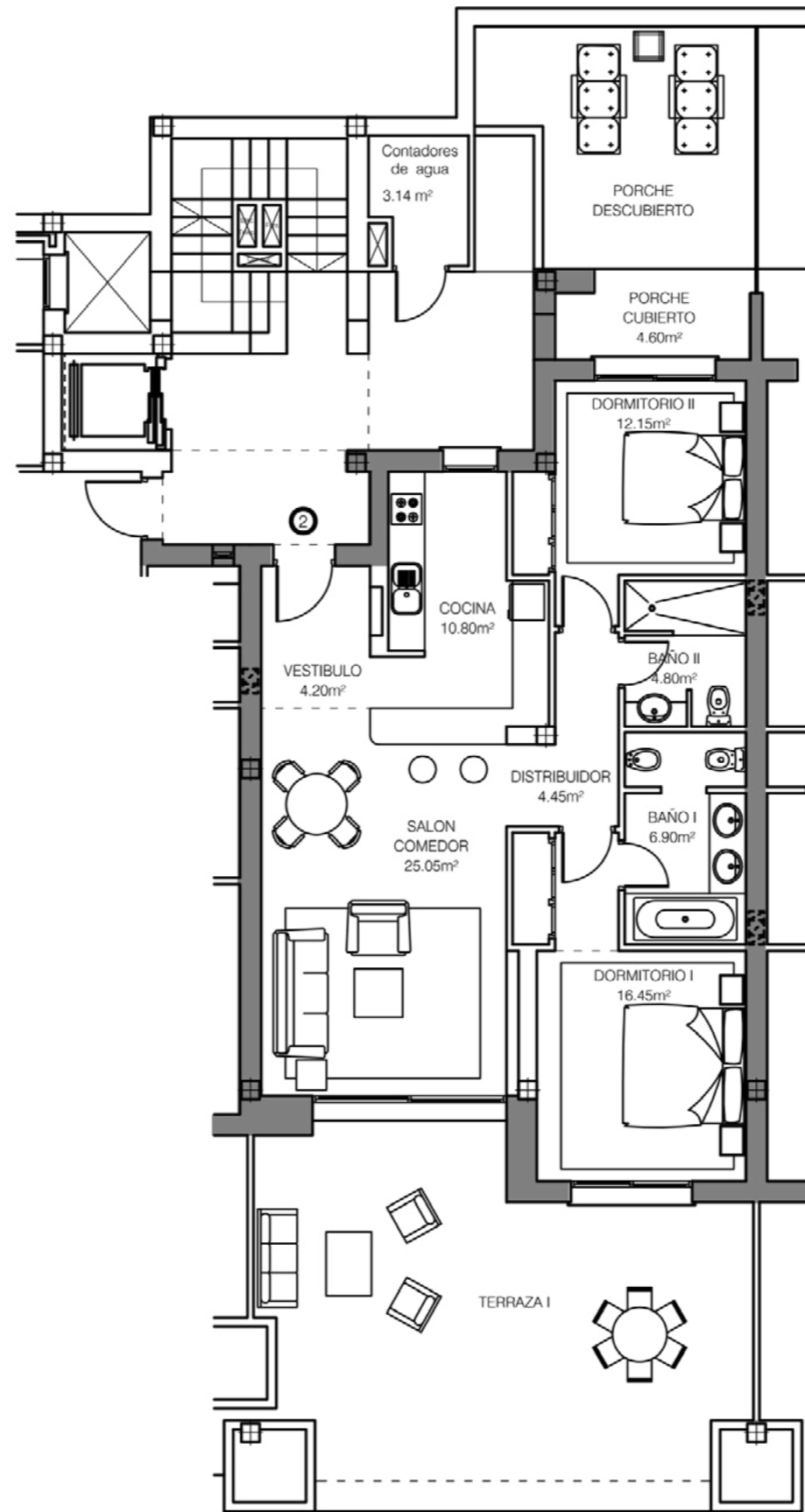
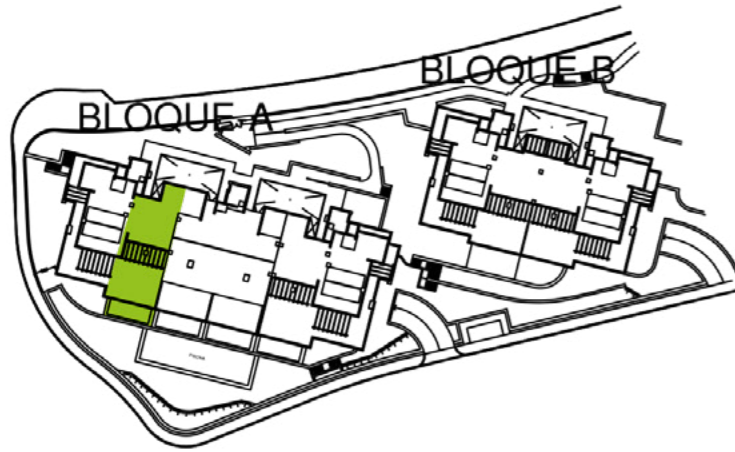


smart LIVING ...for Smart People

exacon
smart LIVING

APARTAMENTO 2

2 DORMITORIOS
BLOQUE A. ESCALERA I.
PLANTA BAJA



SUPERFICIES

Superficie útil	89,40 m ²
Superficie construida	100,40 m ²
Superficie construida Z.C.	22,50 m ²
Superficie terraza	53,54 m ²
Superficie patio	18,45 m ²
Superficie jardín	20,00 m ²
TOTAL	214,89 m²

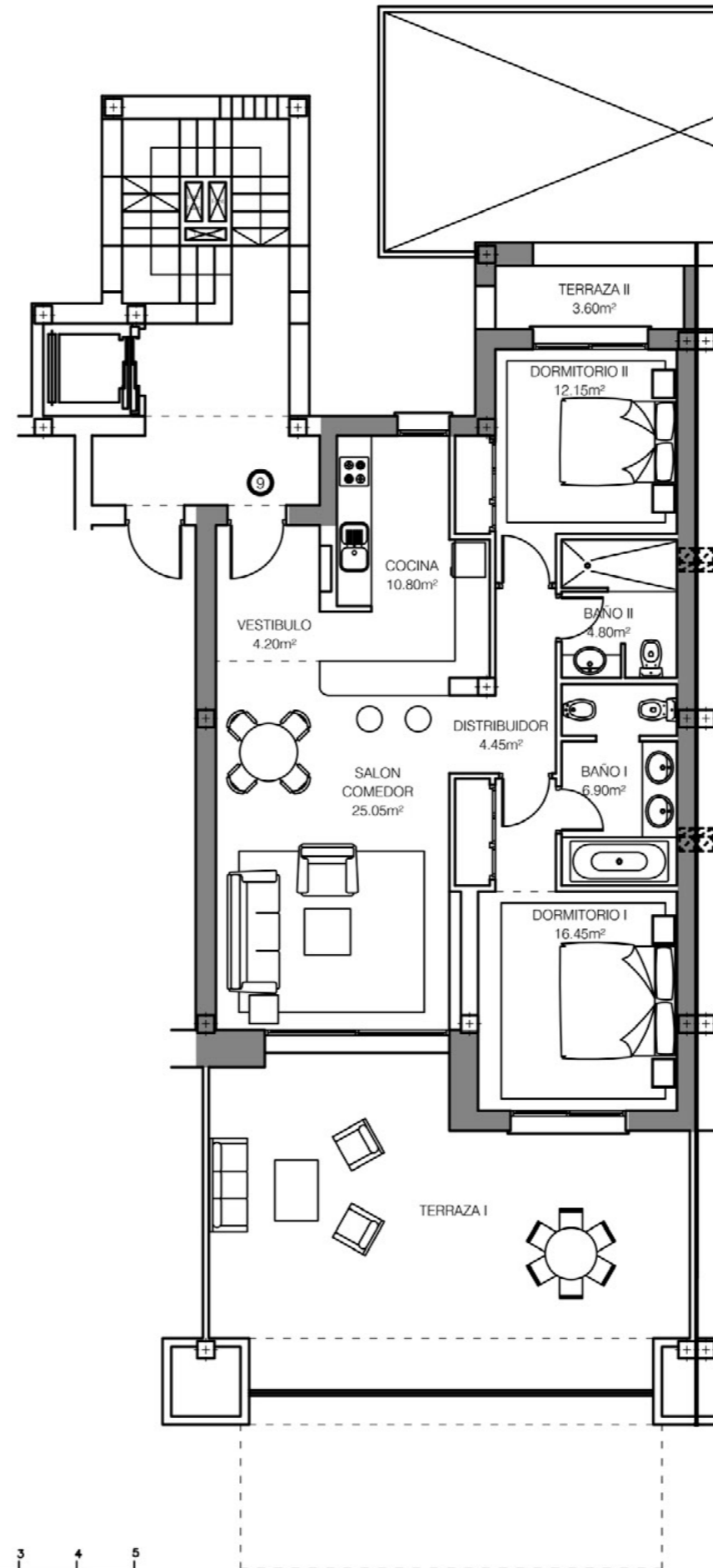
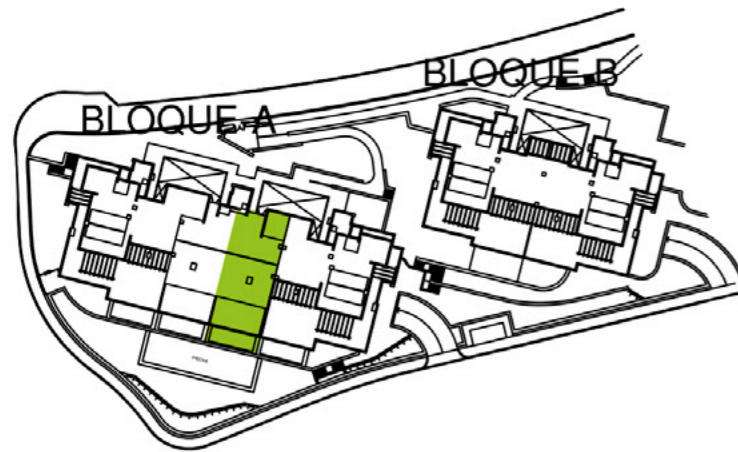


APARTAMENTO 9

2 DORMITORIOS

BLOQUE A. ESCALERA 2.

PLANTA PRIMERA



SUPERFICIES

Superficie útil	88,80 m ²
Superficie construida	102,52 m ²
Superficie construida Z.C.	14,10 m ²
Superficie terraza	51,00 m ²
TOTAL	167,62 m²



ESCALA GRAFICA



LAS TERRAZAS DE CORTESÍN
URBANIZACIÓN FINCA CORTESÍN

In compliance with the DECREE of the Junta de Andalucía 218/2005, the useful surface of exterior floor spaces which are for the private use of the dwellings means 50% of the actual surface to a maximum of 10% the useful enclosed surface.

Information, computer graphics and graphic documentation that appear in this document are indicative, finishings may include extras that are subject to changes arising from final project and its construction. All the furniture is merely decorative. The other information referred to in R.D.218/2005 of the Government of Andalusia, is available in our offices for consultation.