



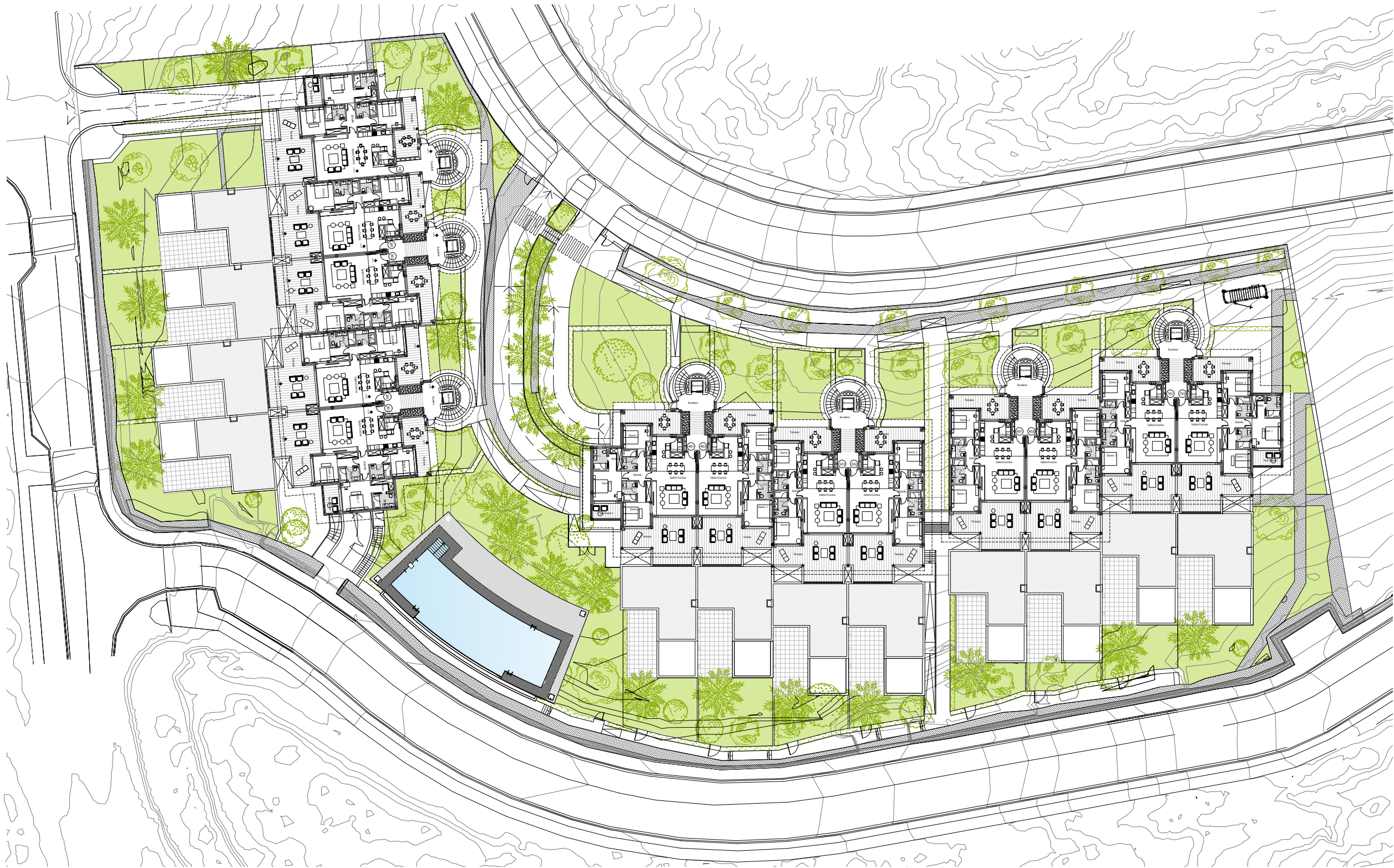
TERRAZAS DE CORTESÍN  
*Seaviews*

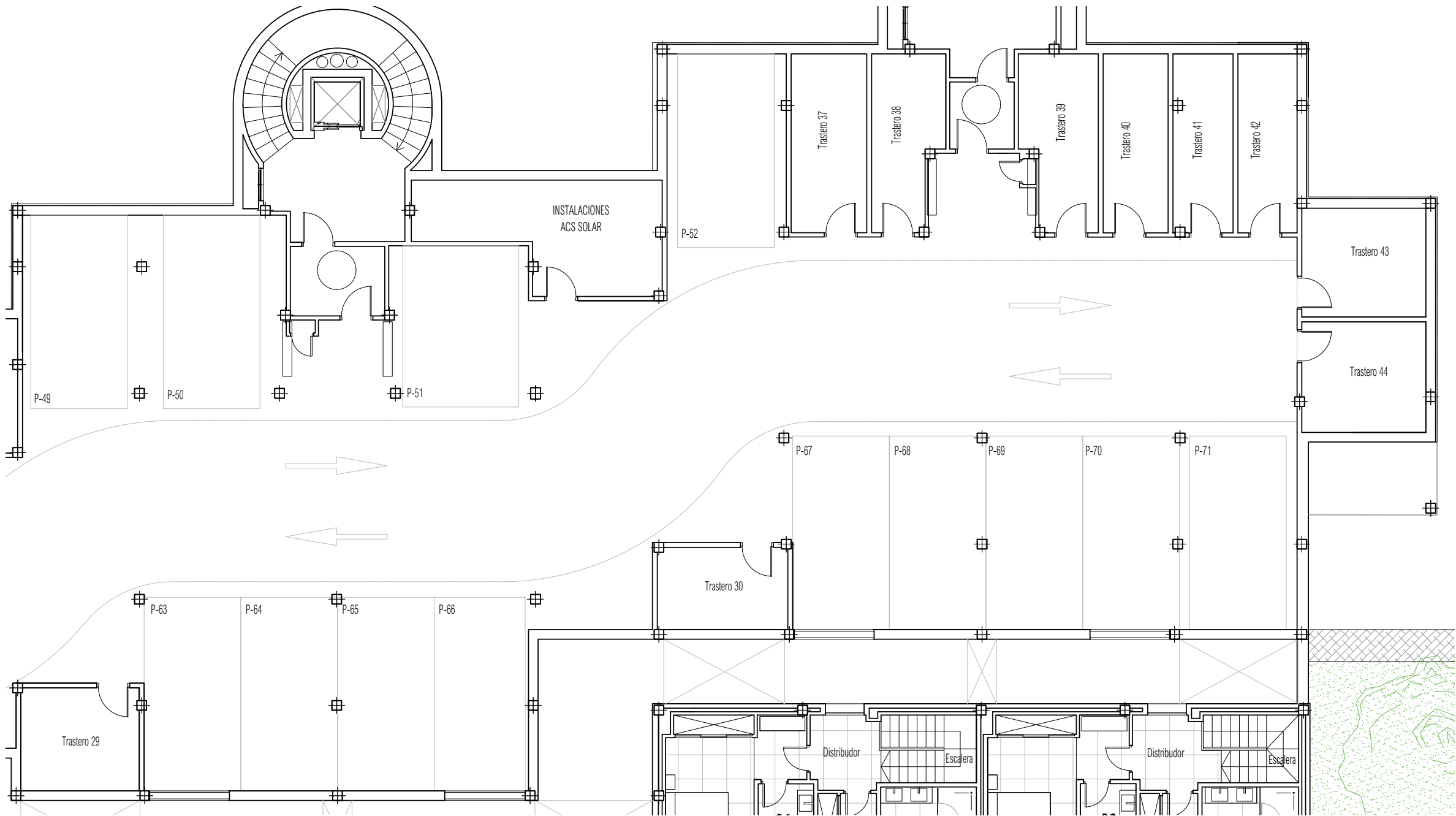


Floor Plans

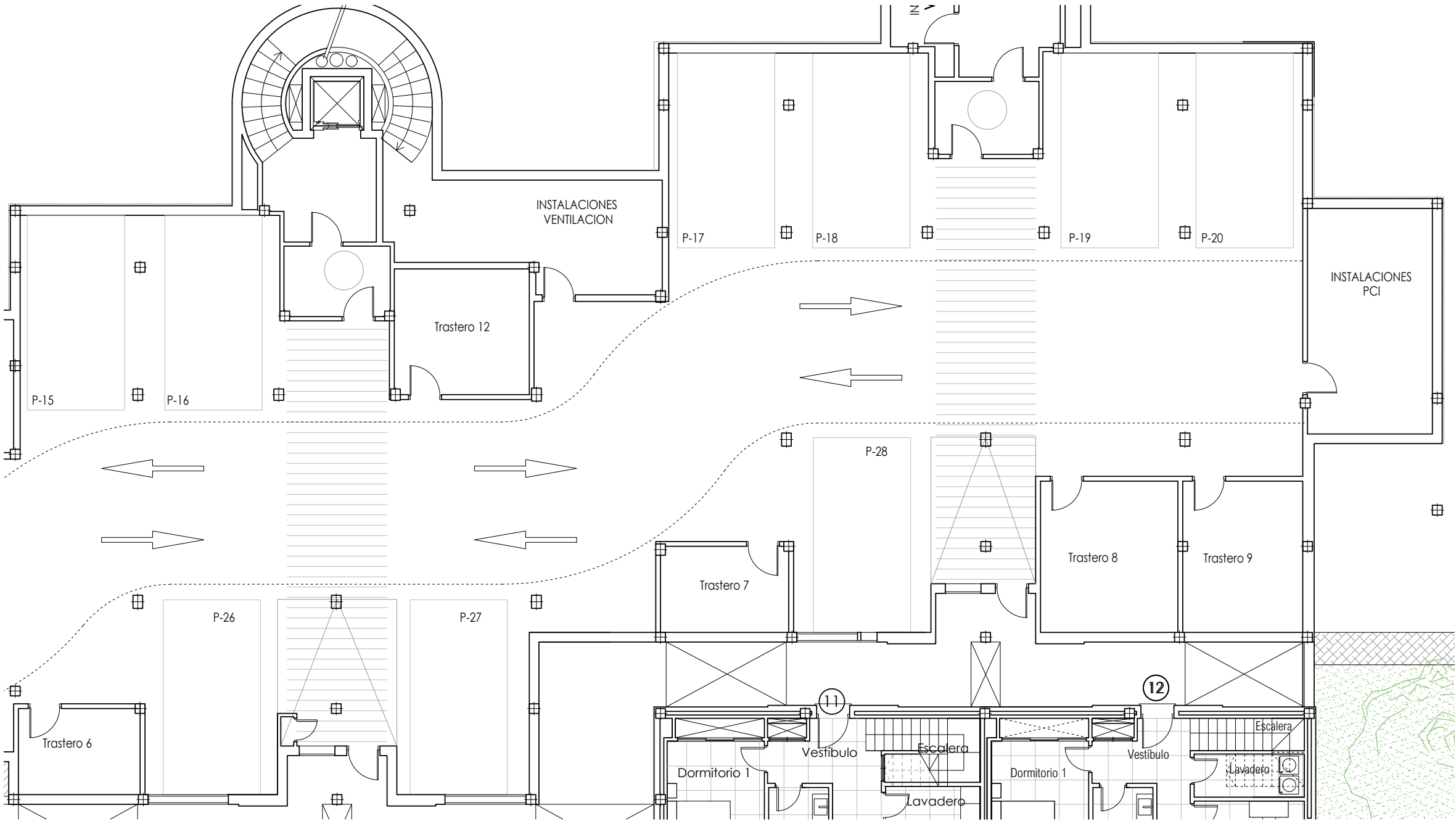


ZONING PLAN  
GROUND FLOOR



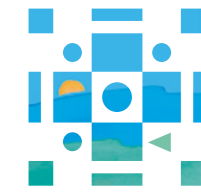








TERRAZAS DE CORTESÍN  
*Seaviews*



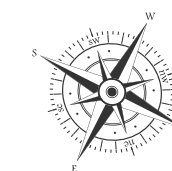
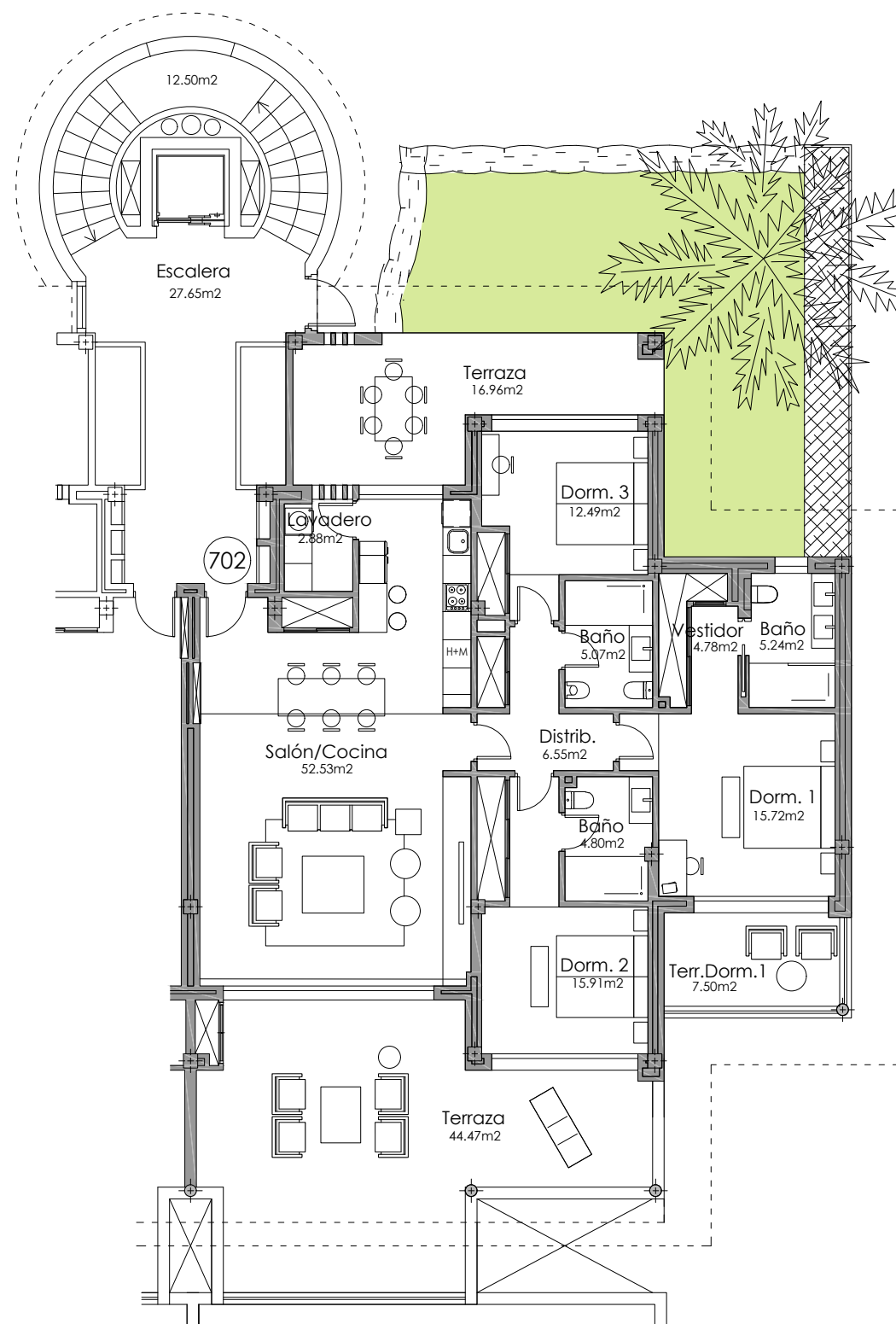
APARTMENTS



BLOCK C. STAIRCASE 7 GROUND FLOOR



Block C

50,20 m<sup>2</sup>

Information and graphic material are purely informative and have no contractual value. They may be subject to changes due to technical or legal requirements or by initiative of the Project Management team. Gardening, decoration and furniture are for the purpose of decoration and are non-binding. The remaining information referring to the Royal Decree 218/2005 from the Andalusian Government is available in our offices.

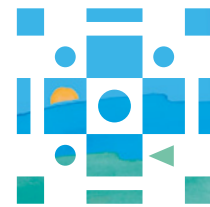




TERRAZAS DE CORTESÍN  
*Seaviews*

In compliance with the DECREE of the Junta de Andalucía 218/2005, the useful surface of exterior floor spaces which are for the private use of the dwellings means 50% of the actual surface to a maximum of 10% the useful enclosed surface.

Information, computer graphics and graphic documentation that appear in this brochure are indicative, finishes may include extras not included are subject to changes arising from final project and its construction. All the furniture is merely decorative. The other information referred to in R.D.218/2005 of the Government of Andalusia, is available in our offices for consultation.



TERRAZAS DE CORTESÍN  
*Seaviews*



**TUSCANY**  
REALTY GROUP

T. +34 951 635 631  
info@tuscanygroup.es  
tuscanygroup.es

**exacon**  
*smart* LIVING

*smart* LIVING ...for Smart People

