

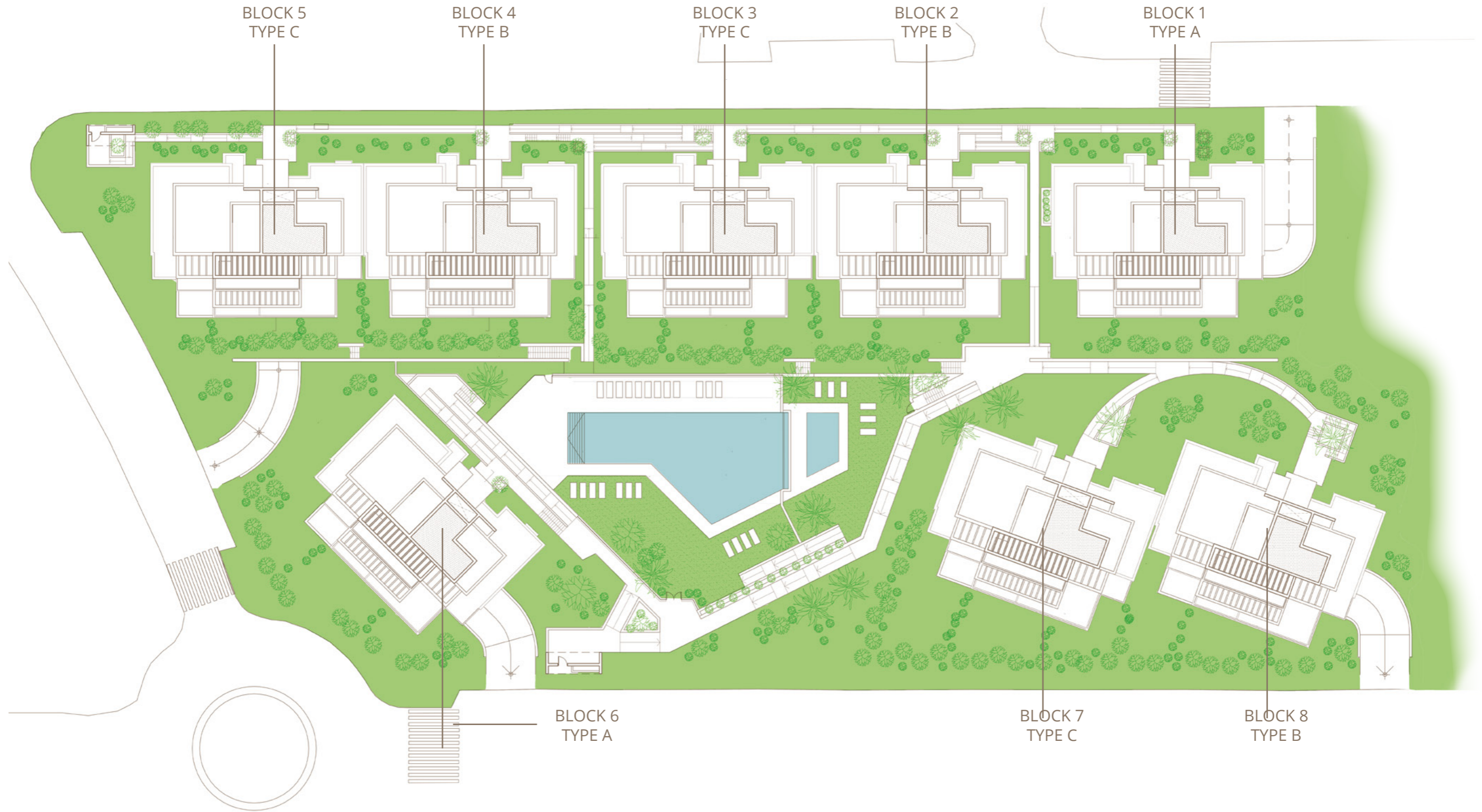
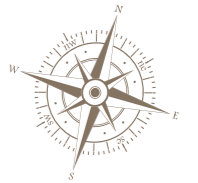


Floor Plans



# GENERAL FLOORPLAN

64 APARTMENTS, PARKING  
& STORAGE ROOMS



TUSCANY  
REALTY GROUP

**exacon**  
*smart* LIVING

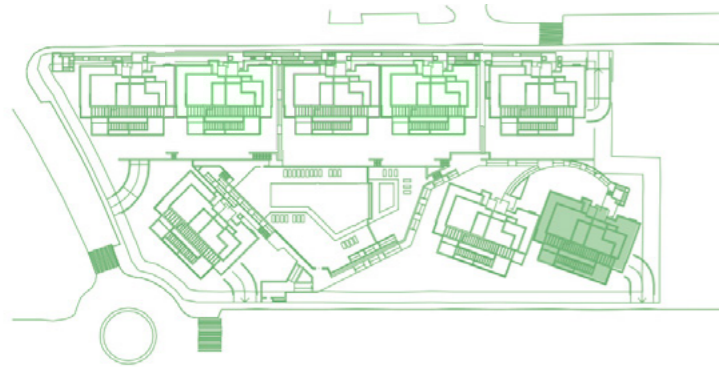


**Cortijo del Golf**  
RESORT  
Contemporary Apartments

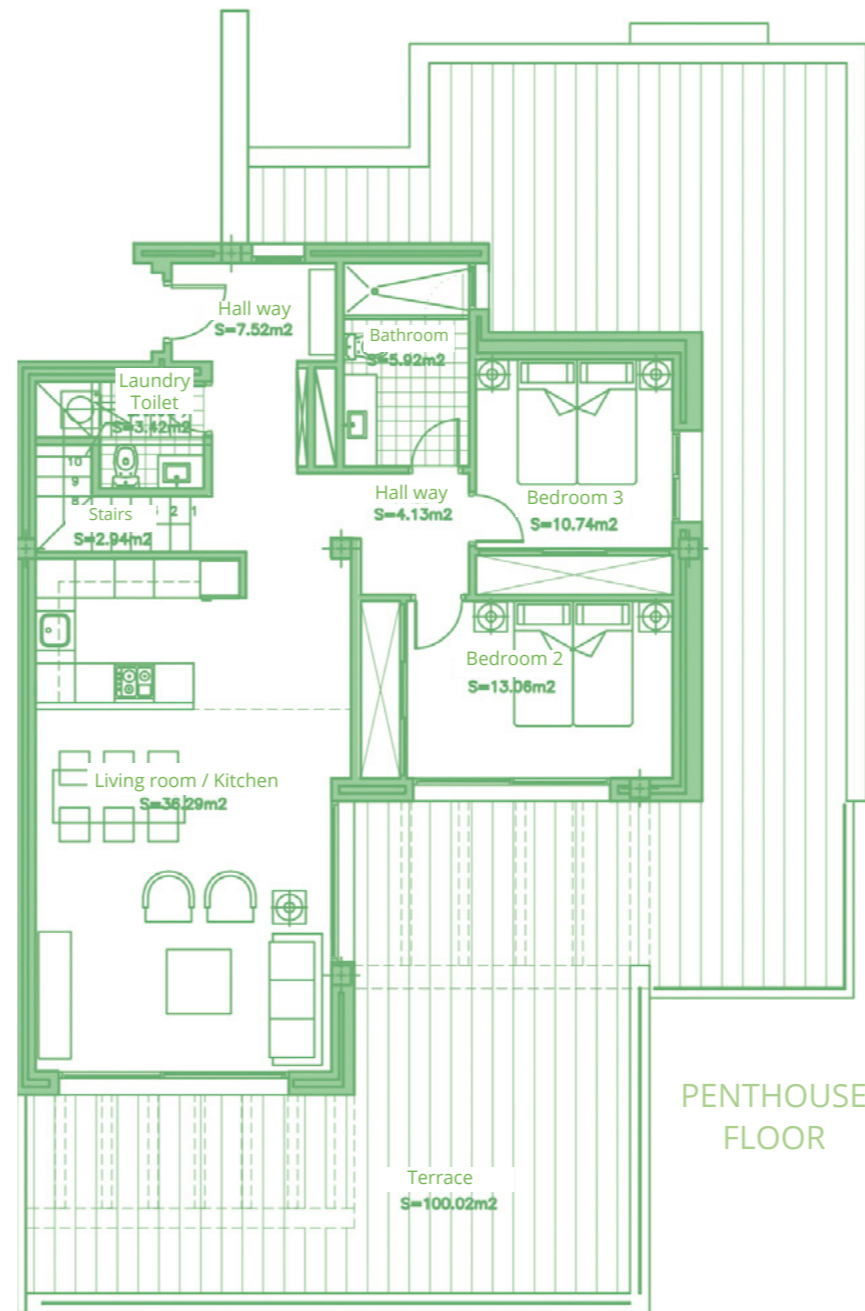


# APARTMENT 822

3 BEDROOMS  
BLOCK 8, TYPE B. PENTHOUSE FLOOR



BLOCK B



## SURFACES

Surface of constructed area	142,93 m <sup>2</sup>
Surface of communal area	15,28 m <sup>2</sup>
Surface of terrace area	162,55 m <sup>2</sup>

## TOTAL SURFACE

	320,76 m <sup>2</sup>
--	-----------------------

Surface of utilised area	116,48 m <sup>2</sup>
--------------------------	-----------------------

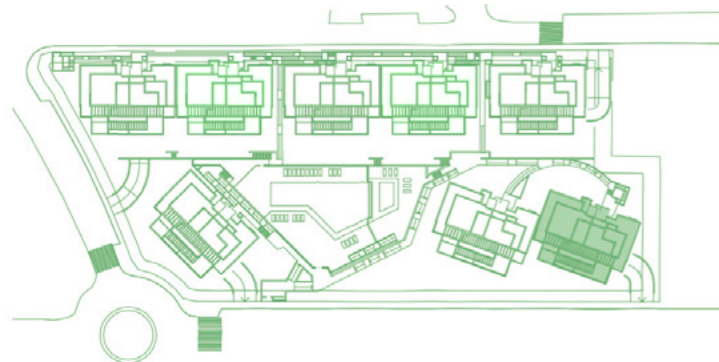
Information given is subject to modification for technical, construction or legal reasons



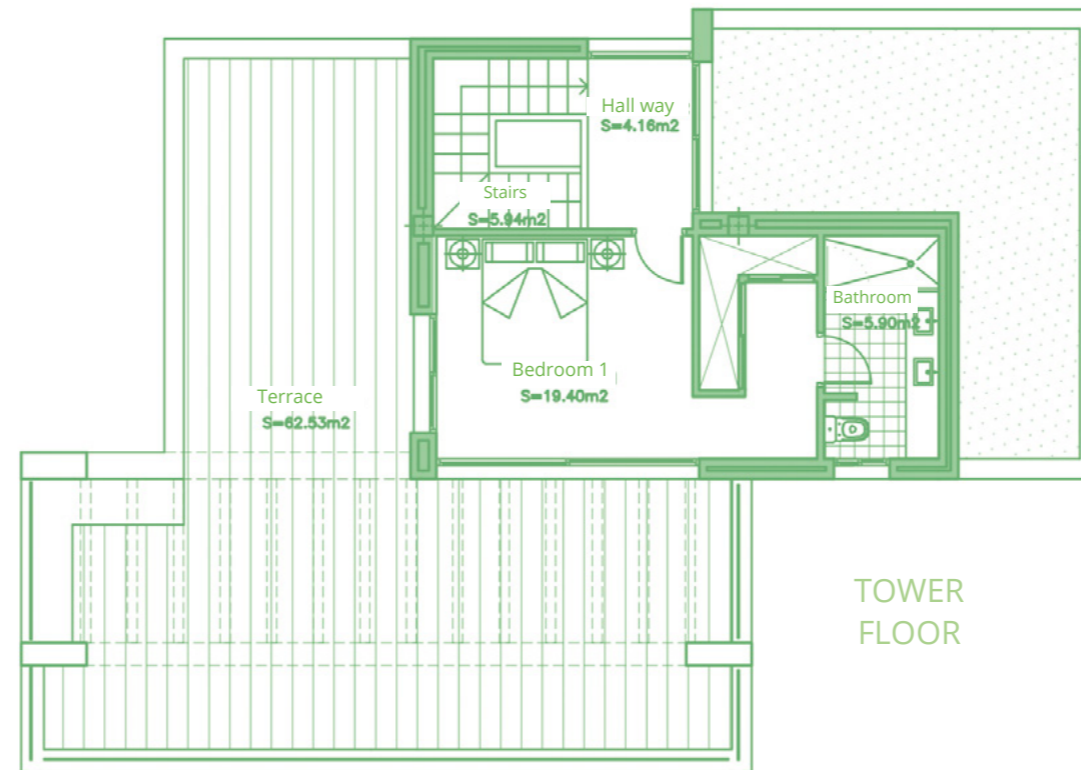


# APARTMENT 822

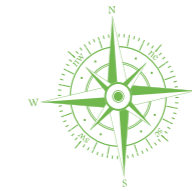
3 BEDROOMS  
BLOCK 8, TYPE B. TOWER FLOOR



BLOCK B



TOWER FLOOR



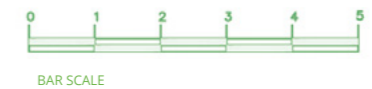
## SURFACES

Surface of constructed area	142,93 m <sup>2</sup>
Surface of communal area	15,28 m <sup>2</sup>
Surface of terrace area	162,55 m <sup>2</sup>

## TOTAL SURFACE

Surface of utilised area	116,48 m <sup>2</sup>
--------------------------	-----------------------

Information given is subject to modification for technical, construction or legal reasons



TUSCANY  
REALTY GROUP

**exacon**  
*smart* LIVING



**Cortijo del Golf**  
RESORT  
Contemporary Apartments



In compliance with the DECREE of the Junta de Andalucía 218/2005, the useful surface of exterior floor spaces which are for the private use of the dwellings means 50% of the actual surface to a maximum of 10% the useful enclosed surface.

Information, computer graphics and graphic documentation that appear in this document are indicative, finishings may include extras that are subject to changes arising from final project and its construction. All the furniture is merely decorative. The other information referred to in R.D.218/2005 of the Government of Andalusia, is available in our offices for consultation.



**TUSCANY**  
REALTY GROUP

T. +34 951 635 631  
info@tuscanysgroup.es  
tuscanysgroup.es

**exacon**  
*smart* LIVING

*smart* LIVING ...for Smart People

